

LIBERTY  
ACADEMY  
CHURCH OF ENGLAND



Thursday 4th September 2025

Welcome to Year 11!



1 Bilton Grove,  
Hull,  
HU9 5YB

**Tel:** 01482 781912  
**Email:** [hello@lib.hlt.academy](mailto:hello@lib.hlt.academy)  
**Website:** [lib.hlt.academy](http://lib.hlt.academy)

# Outline of Event

- **Welcome: Mrs Hill, Vice Principal, Quality of Education**
- **Message from Mrs Beasley, Principal**
- **Attendance and Rewards - Mr Matt McGrath, Assistant Vice Principal**
- **Quality of Education: Mrs Kristina Hill, Vice Principal**
- **Careers: Mrs Katrina Stephenson, Associate Assistant Vice Principal**
- **Maths, English and Science: Miss Lizzie O'Sullivan, Mr Mike Hewitt, Mr John Davison and Miss Christine Angell**
- **Final message: Mrs Hill**

Refreshments will be served following the presentation in the Theatre Bar, where you will also have the opportunity to meet key Year 11 staff, SLT, Heads of Subject, Form Tutors and members of the SEND Team.

We encourage you to ask as many questions as you can and we'll do our best to answer them.



# Expectations and Partnership Work

Our standards in Year 11, and indeed the Academy as a whole, are incredibly high. We expect our students to adhere to expectations surrounding behaviour, uniform and their approach to learning.

We set our standards high, to help our students achieve the best.

In most industries, employees are expected to follow codes of conduct and adhere to dress codes, we are no different at ASA. We are helping to prepare our students for this world.

We challenge our students to achieve the best, that applies to all aspects of Academy life.

Working together with parents and carers is crucial in achieving all of the above.



Mrs Beasley  
Principal

LIBERTY  
ACADEMY  
CHURCH OF ENGLAND



1 Bilton Grove,  
Hull,  
HU9 5YB

**Tel:** 01482 781912  
**Email:** [hello@lib.hlt.academy](mailto:hello@lib.hlt.academy)  
**Website:** [lib.hlt.academy](http://lib.hlt.academy)

Together, we make it possible



**LIBERTY  
ACADEMY**  
CHURCH OF ENGLAND

Mr Mcgrath

Attendance

LIBERTY  
ACADEMY  
CHURCH OF ENGLAND



1 Bilton Grove,  
Hull,  
HU9 5YB

**Tel:** 01482 781912  
**Email:** [hello@lib.hlt.academy](mailto:hello@lib.hlt.academy)  
**Website:** [lib.hlt.academy](http://lib.hlt.academy)

# Attendance

The expectation is that students attend school all of the time. We understand that there may be times when students are too ill to attend. However, the majority of reported illnesses do not require time off school.

Why do we ask this?

There is a direct link between good attendance and good outcomes.



**LIBERTY  
ACADEMY**  
CHURCH OF ENGLAND

# Attendance

If your attendance falls below 90% and you call for further absence reporting it will not be an authorised absence.

When you request your attendance information for future employers we have to be truthful.

You will also receive a letter from our Attendance Team explaining your attendance will be monitored.





# Attendance

We understand medical appointments, and orthodontist appointments are dictated to by the healthcare professionals. All we ask is you work with us, and submit the medical evidence.

Please work with us, and report absence early. If you fail to report absence we are likely to conduct home visits, so please answer the door!

Remember - Good attendance means good outcomes.



**LIBERTY  
ACADEMY**  
CHURCH OF ENGLAND

# Prom - Secure your early entry!

Prom will take place in June 2025.

Throughout the year there will be a variety of incentives linked to Prom.

The first one launches tonight.

Between now and Christmas, if your attendance is 90% or above\* AND you attend and complete all of your PPE examinations\* you will secure your place early



**LIBERTY  
ACADEMY**  
CHURCH OF ENGLAND

Mrs Hill

Quality of Education

LIBERTY  
ACADEMY  
CHURCH OF ENGLAND



1 Bilton Grove,  
Hull,  
HU9 5YB

**Tel:** 01482 781912  
**Email:** [hello@lib.hlt.academy](mailto:hello@lib.hlt.academy)  
**Website:** [lib.hlt.academy](http://lib.hlt.academy)

# ***The most life-changing impact we can have on a student's education is improving their exam results***

- GCSE exam results open and close doors
- 5 Grade 5s (Maths/English)=secure Post 16 place on Level 3 programmes
- Grade 4 in Maths and English is a government expectation; those who do not secure at in year 11 cannot take a Level 3 Post 16 place
- The above means students have to continue resitting Maths and English
- The above means not being able to access university or higher level apprenticeships
- The above means staying at college for 3 years (in some cases), rather than 2 years



# ***The most life-changing impact we can have on a student's education is improving their exam results***

We promise: we will do ALL it takes to support you but we have HIGH EXPECTATIONS.

We ask YOU to:

- Try your absolute best in every lesson
- Produce a lot of work during the YOU DO/ILZ phase of the lesson
- Engage fully in our intervention offer.



**LIBERTY  
ACADEMY**  
CHURCH OF ENGLAND

# ***The most life-changing impact we can have on a student's education is improving their exam results***

We promise: we will do ALL it takes to support you but we have HIGH EXPECTATIONS

Our intervention/support offer:

- Regular Walking Talking Mocks (English/Maths/Science)
- Morning Revision Breakfast Club 8am with Miss Lowe (Mon-Thu)
- After School Sessions/Lesson 6
- Bespoke programme of small group tutoring
- Home Revision support (more detail from English/ Maths/Science to follow tonight)
- Bespoke Rewards Strategy



**LIBERTY  
ACADEMY**  
CHURCH OF ENGLAND

# ***The most life-changing impact we can have on a student's education is improving their exam results***

We promise: we will do ALL it takes to support you but we have HIGH EXPECTATIONS

Our intervention/support offer:

- Mock Exams in November and March (with results evenings to share successes with parents and carers)
- Parents' Evening 8/1/2026
- Revision in the School Holidays (Easter/May Half Term)
- Supported revision during the Exam Window—No Study Leave



**LIBERTY  
ACADEMY**  
CHURCH OF ENGLAND

# ***The most life-changing impact we can have on a student's education is improving their exam results***

We promise: we will do ALL it takes to support you but we have HIGH EXPECTATIONS

- Autumn/Spring Mock Exams—we will visit non-attenders and ask them to plug gaps
- We will sanction students who disrupt mock exams in order to avoid disqualification in the real exam
- We will support students to get used to exam conditions and minimise interruptions (eg toilet breaks unless a student has a toilet pass)
- We will work with students to overcome barriers eg mobile phone storage during exams





# ***The most life-changing impact we can have on a student's education is improving their exam results***

We promise: we will do ALL it takes to support you but we have HIGH EXPECTATIONS

- We will support with exam seating issues: please bring in medical evidence to school by 30/09/2025 if you require Access for the examinations
- We will give support at designated results evenings and in class to help you make progress throughout the year
- We will ensure the run up to exams maximises opportunities for revision in class and beyond



**LIBERTY  
ACADEMY**  
CHURCH OF ENGLAND

# ***The most life-changing impact we can have on a student's education is improving their exam results***

We promise: we will do ALL it takes to support you but we have HIGH EXPECTATIONS

Final take away:

We are here to help AND we expect to work together with parents and students to make this year's GCSE results the highest possible.

Our Rewards are linked to attitude to learning, school attendance and mock exam attendance.



**LIBERTY  
ACADEMY**  
CHURCH OF ENGLAND

***The most life-changing impact we can have on a student's education is improving their exam results***

**We promise: we will do ALL it takes to support you but we have HIGH EXPECTATIONS**

**We are here to help AND we expect to work together with parents and students to make this year's GCSE results the highest possible.**

**Any issues, please feel free to contact the school so that we can support!**



**LIBERTY  
ACADEMY**  
CHURCH OF ENGLAND

Mrs Stephenson

Careers

LIBERTY  
ACADEMY  
CHURCH OF ENGLAND



1 Bilton Grove,  
Hull,  
HU9 5YB

**Tel:** 01482 781912  
**Email:** [hello@lib.hlt.academy](mailto:hello@lib.hlt.academy)  
**Website:** [lib.hlt.academy](http://lib.hlt.academy)

# Year 11 Careers

- **Careers support from the Academy's Careers Adviser (Mrs Lockham – who is based in the library)**
- **One to One information advice and guidance (IAG) interviews with Mrs Lockham or a Connexions Adviser**
- **Research Options eg. Attend Open Events, check deadlines**
- **Post-16 Applications – Logon Moveon**
- **Attend College/Apprenticeship interviews - these should be arranged after school**
- **Further Help and Support will be provided throughout the year**
- **Careers Fair/Employer talks**
- **Parents/carers will be invited to attend an information evening regarding college/apprenticeship applications**



# Year 11 Careers

- THE ACADEMY WILL SUPPORT YOUR CHILD EVERY STEP OF THE WAY!!
- We will also support parents/carers
- Careers Email: careers@lib.hlt.academy
- [k.stephenson@lib.hlt.academy](mailto:k.stephenson@lib.hlt.academy) / a.lockham[@lib.hlt.academy](mailto:a.lockham@lib.hlt.academy)



Miss O'Sullivan

English

LIBERTY  
ACADEMY  
CHURCH OF ENGLAND

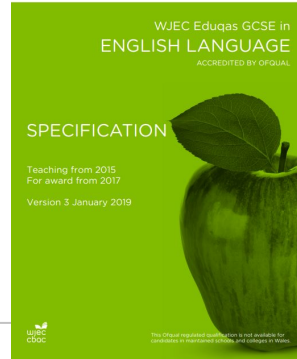


1 Bilton Grove,  
Hull,  
HU9 5YB

**Tel:** 01482 781912  
**Email:** [hello@lib.hlt.academy](mailto:hello@lib.hlt.academy)  
**Website:** [lib.hlt.academy](http://lib.hlt.academy)







## Component 1 : Fiction

Reading

Writing

## Component 2 : Non-fiction

Reading

Writing



# Walking Talking Mocks

- Students are taken to the Gym where they will complete a 'Walking Talking Mock'
- Opportunity to experience what the exams will entail and be guided by expert teachers
- There are six 'WTMs' scheduled throughout the year
- Students will practise these methods during lesson time



# *How else can I support my child to revise for English?*

- Get them READING
- Encourage them to attend SPS and any revision sessions
- Use the packs from this evening
- Log into GCSE Pod
- Help them to make quote cards/revision aids at home
- Encourage them to speak to their English teacher for any further support



Mr Hewitt

Maths

LIBERTY  
ACADEMY  
CHURCH OF ENGLAND



1 Bilton Grove,  
Hull,  
HU9 5YB

**Tel:** 01482 781912  
**Email:** [hello@lib.hlt.academy](mailto:hello@lib.hlt.academy)  
**Website:** [lib.hlt.academy](http://lib.hlt.academy)

# EDEXCEL Maths GCSE

- **3 exam papers**
  - **1 Non-Calculator, 2 Calculator**
- **80 marks per paper**
- **Higher vs Foundation**



# EDEXCEL Maths GCSE

## Y11 NOVEMBER PPE - FOUNDATION Revision List

Paper 1				Paper 2				Paper 3			
Ques	Topic	Marks	Mathswatch clip	Ques	Topic	Marks	Mathswatch clip	Ques	Topic	Marks	Mathswatch clip
11 marks for a grade 1	1 Round to the nearest 10, 100, 1000	1	31	11 marks for a Grade 1	1 Ordering integers	1	2	11 marks for a Grade 1	1 Percentage as a fraction	1	85
	2 Decimal as a percentage	1	85		2 Metric conversion	1	112		2 Metric conversion	1	112
	3 Names of angle	1	13		3 Fraction as a decimal	1	84		3 Place value	1	1
	4 Ordering decimals	1	3		4 Multiples	1	28		4 Simplifying expressions	1	33
	5 Squares and roots	1	81		5 Algebraic conventions	1	7		5 Ordering fractions	1	70
	6 Money problems	4	22		6 Pictograms	5	16		6 Maps and scale factors	4	38
	7 Bar charts	3	15		7 Measuring lines	1			7 Bar charts	2	15
24 marks for a Grade 2	8 Angles at a point	3	45	24 marks for a Grade 2	8 Measuring angles	1	48	24 marks for a Grade 2	8 Adding integers problem	3	17
	9 Function machines	5	36		9 Drawing 2D shapes	1	10		9 Money questions	3	22
	10 Simplifying a ratio	2	38		10 Coordinates	4	8		10 Circle definitions	2	116
	11 Operations with negatives	1	68		11 Money questions	4	22		11 Time calculations	2	6
	11 Working with indices	1	82		11 Listing outcomes	2	58		12 Prime numbers	2	28
	11 BIDMAS	1	75		11 Probability	1	59		13 Two-way tables	3	61
	12 Perimeter	3	52		12 Fraction of an amount	3	72		14 Construct a pie chart	3	128
37 marks for a Grade 3	12 Fraction of an amount	1	72	37 marks for a Grade 3	13 Simplifying expressions	1	34	37 marks for a Grade 3	15 Percentage of an amount	3	88
	13 Probability	3	59/125		13 Substitution	2	95		16 Simplifying expressions	1	29
	14 Multiplying integers	3	19		14 Speed/Distance/Time	5	142a		16 Forming expressions	2	137
	15 Stem and leaf diagrams	4	128b		15 Simple interest	2	111		17 Using ratio in recipes	3	39
	16 Value for money	3	41		16 Conversion graphs	3	107		18 Rotations	2	49
	17 Solving equations	3	136		17 Loci	3	148		18 Reflections	1	48
	18 Working with indices	1	82	49 marks for a Grade 4	18 Percentage of an amount	3	86	49 marks for a Grade 4	19 Straight line graphs	3	96
49 marks for a Grade 4	19 Translations	2	50		19 Using a calculator	2	77		20 Angles in a triangle	3	121
	20 Finding the nth term	2	103		19 Round to a sig fig	1	90		20 Simplifying a ratio	2	38
	21 Subtraction with fractions	2	71		20 Pythagoras' theorem	2	150		21 Simple factorisation	2	64
	21 Multiplying with fractions	1	73		21 Product of primes	2	78		22 HCF	2	79
	22 Applications of Area	5	53		21 LCM	1	80	61 marks for a Grade 6	23 Standard form	4	83
	23 Venn diagrams, notation and probability	3	127	61 marks for a Grade 5	22 Substitution	2	95		24 Plans and elevations	3	51
	24 Estimation	4	91		23 Experimental probability	2	125		25 Compound interest	4	164
61 marks for a Grade 5	25 Equations of straight line graphs	3	159		23 Sharing in a ratio	2	108		26 Density/Mass/Volume	4	142b
	25 Equations of parallel lines	1	159		24 Quadratic graphs	6	98		27 Probability tree diagrams	4	151
	26 Fraction of an amount	1	72		25 Fraction of an amount	2	72		28 Volume of prisms	4	119
	26 Ratio with overlap	3	105b		26 Percentage of an amount	2	80		29 Substitution	2	95
	26 Change to a percentage	2	89		26 Forming and solving equations with angles	4	137		29 Change the subject	2	101/138
	27 Reverse percentages	2	110		27 Similar shapes	2	144				
	28 Solve linear inequalities	3	139		28 Averages from a table	4	130				



# EDEXCEL Maths GCSE

## Top tips!

- Use Sparx - Mr Davison will talk about this soon
- Do your best in every lesson - don't have any regrets when you open your results envelope
- Revise for your mocks and assessments
- Ensure your book is revision ready - have pride in your presentation



Mr Davison

SPARX Revision

LIBERTY  
ACADEMY  
CHURCH OF ENGLAND



1 Bilton Grove,  
Hull,  
HU9 5YB

**Tel:** 01482 781912  
**Email:** [hello@lib.hlt.academy](mailto:hello@lib.hlt.academy)  
**Website:** [lib.hlt.academy](http://lib.hlt.academy)

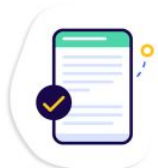


# What is Sparx?

## Your Smart Learning Assistant!



Homework that is made for you



Support to ensure you can get every question right



Gets you thinking hard and learning!



Practice on what you're learning about in class

# What does Sparx look like?

The screenshot displays the Sparx Maths user interface. At the top, a blue header bar contains the 'Sparx Maths' logo on the left, and user information '170 XP Mr Pollock' along with a notification bell and a 'Menu' button on the right. On the left side, there is a vertical navigation menu with four icons: a star for 'Compulsory', a lightning bolt for 'XP Boost', a crown for 'Target', and a lightbulb for 'Independent Learning'. The main content area features a personalized greeting 'Hey Mr Pollock,' followed by a message: 'This is your personalised Compulsory homework. You need to answer every question correctly to complete it.' To the right of this message is a circular progress indicator showing '0/1'. Below the greeting is a section titled 'Introducing Sparx Maths' with a 'Bookwork' progress bar at '11%'. This section contains three cards: a green card for 'About Sparx Maths (1:35)' marked 'Completed' with a plant icon; a blue card for 'Try some questions (about 5 minutes)' with a 'Start >' button and a person icon; and a grey card for 'Sparx Maths Tips (0:39)' marked 'Locked' with a mountain icon.

Your compulsory homework will be available in the top left corner of the screen.

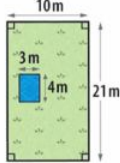
Other tabs such as XP boost, target or independent learning allow you to gain further XP points!!

# What does Sparx look like?

Support video

**Tip!** Watching all of the video will help you get it right. Pause it if you need.

Celia has a pond in her garden, as shown in the diagram.  
What is the **area of grass** in her garden?



Not to scale

**Key**

- Grass
- Pond

we're looking at areas of rectangles.

0:05 / 1:05

Close video X

Every question has a video available if you are stuck

# What does Sparx look like?

Bookwork check

Which of these six options is the right answer for this question?

Bookwork 3A

a) Parallel b) Not parallel <a href="#">Zoom</a>	a) 9 b) 6 <a href="#">Zoom</a>	a) 13 b) -4 <a href="#">Zoom</a>
a) 60 b) 30 <a href="#">Zoom</a>	a) 6 b) 3 <a href="#">Zoom</a>	a) 9 b) 30 <a href="#">Zoom</a>

[I didn't write this down](#) [Submit >](#)

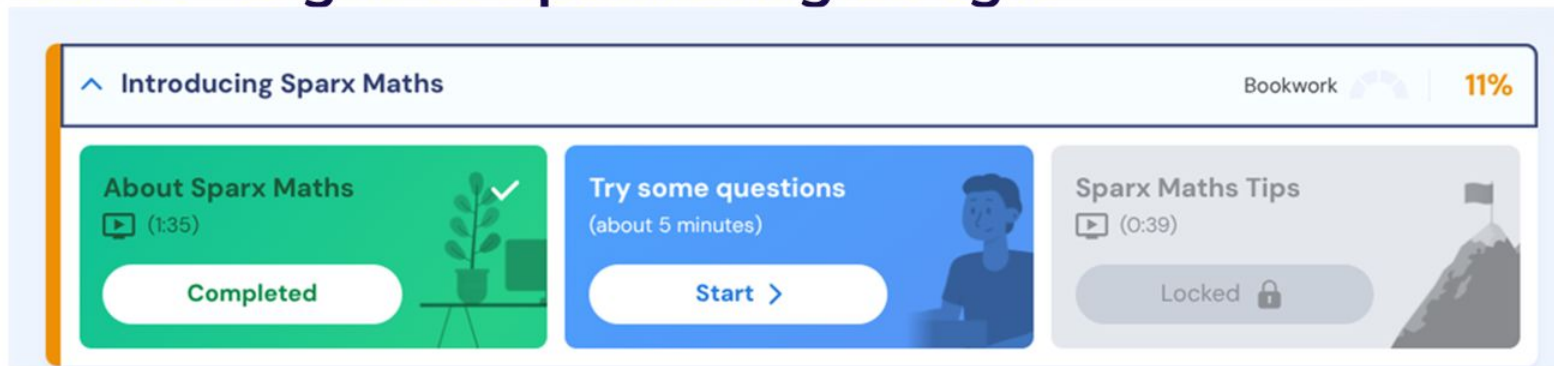
## Bookwork checks

### Writing down your workings:

- Helps you to learn
- Makes it easier to answer more complicated questions
- Helps your teacher or parent support you
- Write down the bookwork code, workings and your answer to every question.
- Sparx will occasionally give you a bookwork code and ask you to enter the answer you wrote for that question.

# Call to Action - Let's Get Started!

1. Go to <https://sparxmaths.com/> or <https://sparxscience.com/>
2. Type the name of your school
3. Select **“Log in to Sparx using Google”**



Miss Angell

Science

LIBERTY  
ACADEMY  
CHURCH OF ENGLAND



1 Bilton Grove,  
Hull,  
HU9 5YB

**Tel:** 01482 781912  
**Email:** [hello@lib.hlt.academy](mailto:hello@lib.hlt.academy)  
**Website:** [lib.hlt.academy](http://lib.hlt.academy)

### Combined HT

99  
98  
88  
87  
77  
76  
66  
65  
55  
54  
44  
**43**  
**U**

### Combined FT

55  
54  
44  
43  
33  
32  
22  
21  
**11**  
**U**

### Separate HT

9  
8  
7  
6  
5  
**4**  
**U**

## Separate Science

6x 1hr 45 min papers

Each paper = 100 marks / 50% of grade

Obtain 3 GCSEs

## Combined Science

6 x 1hr 15min papers

Each paper - 70 marks / 16.7% of grade

Obtain 2 GCSEs

Required practicals - 15% of marks

Maths skills:

Biology - 10%

Chemistry - 20%

Physics - 30%



## Real Exams

12th May 2026 - **Biology P1**

18th May 2026- **Chemistry P1**

2nd June 2026- **Physics P1**

8th June 2026- **Biology P2**

12th June 2026- **Chemistry P2**

15th June 2026- **Physics P2**

4.1 Cell Biology

4.2 Organisation

4.3 Infection &  
Response

4.4 Bioenergetics

5.1 Atomic Structure

5.2 Bonding

5.3 Quantitative  
Chemistry

5.4 Chemical changes

5.5 Energy changes

6.1 Energy

6.2 Electricity

6.3 Particle model of  
matter

6.4 Atomic Structure







SUN	MON	TUE	WED	THU	FRI	SAT
1	2	3	4	5 Training 5-7	6 Cell structure Atoms & energy	7 Biology required practicals
8	9 Physics past paper	10 Chemistry required practicals	11 Rest day	12 Physics required practicals	13	14
15 Biology past paper	16	17 Mocks begin	18	19	20	21
22	23	24	25	26	27	28
29	30	1	2	3	4	5





Exam board = AQA

Combined trilogy

Triple = GCSE Biology

Please write clearly in block capitals.

Centre number       Candidate number

Surname \_\_\_\_\_

Forename(s) \_\_\_\_\_

Candidate signature \_\_\_\_\_

I declare this is my own work.

## GCSE COMBINED SCIENCE: TRILOGY

# F

Foundation Tier  
Biology Paper 1F

Time allowed: 1 hour 15 minutes

### Materials

For this paper you must have:

- a ruler
- a scientific calculator.

### Instructions

- Use black ink or black ball-point pen.
- Pencil should only be used for drawing.
- Fill in the boxes at the top of this page.
- Answer **all** questions in the spaces provided.
- If you need extra space for your answer(s), use the lined pages at the end of this book. Write the question number against your answer(s).
- Do all rough work in this book. Cross through any work you do not want to be marked.
- In all calculations, show clearly how you work out your answer.

### Information

- The maximum mark for this paper is 70.
- The marks for questions are shown in brackets.
- You are expected to use a calculator where appropriate.
- You are reminded of the need for good English and clear presentation in your answers.

For Examiner's Use	
Question	Mark
1	
2	
3	
4	
5	
6	
<b>TOTAL</b>	

And finally ...

LIBERTY  
ACADEMY  
CHURCH OF ENGLAND



1 Bilton Grove,  
Hull,  
HU9 5YB

**Tel:** 01482 781912  
**Email:** [hello@lib.hlt.academy](mailto:hello@lib.hlt.academy)  
**Website:** [lib.hlt.academy](http://lib.hlt.academy)

## Helpful information

We would now like to invite you to have some refreshments, and get to know our staff.

We have representatives from the Senior and Middle Leadership Team, the Tutor Team, the SEND Team and from many of our subject areas.

If you have any questions at all, please don't hesitate to ask.



**LIBERTY  
ACADEMY**  
CHURCH OF ENGLAND

Thank you for attending!

LIBERTY  
ACADEMY  
CHURCH OF ENGLAND



1 Bilton Grove,  
Hull,  
HU9 5YB

**Tel:** 01482 781912  
**Email:** [hello@lib.hlt.academy](mailto:hello@lib.hlt.academy)  
**Website:** [lib.hlt.academy](http://lib.hlt.academy)